

DEC 13 2019

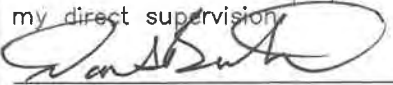
Corners to be Indexed

E1/4 10-105-41

STATE OF MINNESOTA, }  
COUNTY OF MURRAY, } ss.

I hereby certify that the within Instrument  
was filed in this office for record on the  
13<sup>TH</sup> day of DECEMBER A.D. 20 19  
at 9:00 o'clock A. M., and was duly  
recorded as Document No. \_\_\_\_\_

I hereby certify that this document and the data  
contained herein was prepared by me or under  
my direct supervision



Aug. 6, 2019  
Date

Daniel L. Bueltel  
License No. 43844

Evelyn C. Larson  
County Recorder

### CERTIFICATE OF LOCATION OF GOVERNMENT CORNER

Land survey monuments situated in Section 10, Township 105, Range 41, 5TH P.M.

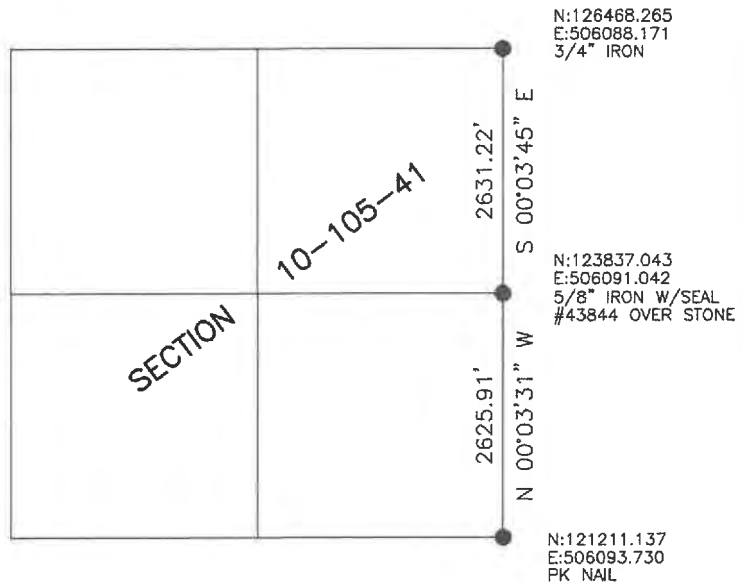
STATE OF MINNESOTA, County of MURRAY

#### STATEMENT OF EVIDENCE:

- 1861 - Original Government Survey
- 1901 - J.W. Woolstiencroft shows a stone at the E1/4 10-105-41.



- FOUND MONUMENT
- SET MONUMENT



Minnesota State Plane Coordinate  
System Murray County Datum NAD83 (1996)

## Statement of Evidence

E1/4 10-105-41

In 1861, Wellman and Smoot did the original subdivision of the township.

On October 18, 1901, J.W. Woolstiencroft shows a stone with X at the corner.

On July 10, 2017, Bueltel-Moseng Land Surveying dug with a backhoe and found a large field stone with "X" chiseled on top. We set a 5/8" iron with seal #43844 over it. It is in the center of the road and in line with the fences to the east and west.